



## Multi-Tiered Systems of Support (MTSS) Overview

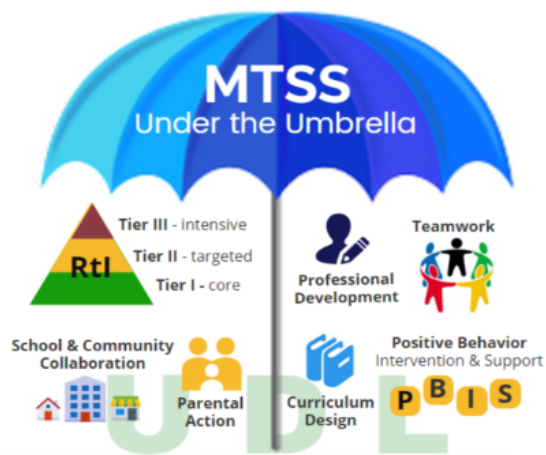
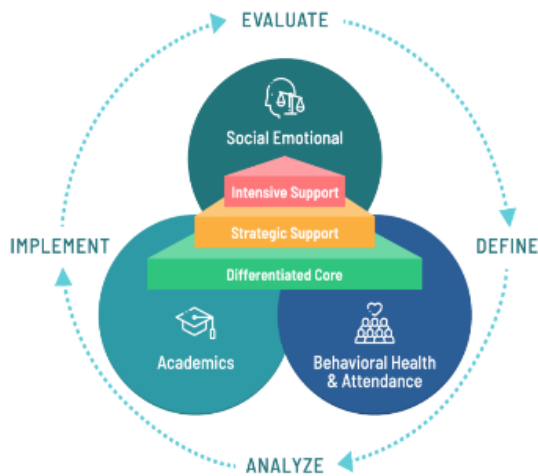
Multi-Tiered Systems of Support (MTSS) is a comprehensive multi-tiered system that works to remove academic, behavioral, and social-emotional barriers. MTSS consists of universal screeners to determine student academic and behavioral supports needed to inform intervention selection and implementation. Through careful progress monitoring, Ivy Hill staff can make data-based decisions to promote student outcomes.

### MTSS is not...

- General or random interventions to address student concerns.
- Only focused on academics and behavior, without acknowledgment of other factors.
- Reserved only for students with special education.
- An opportunity to diagnose a problem in children or refer them for special education.

### MTSS is...

- Data-driven and intentional based on exit tickets, assessments, and attendance.
- Responsive to social-emotional & environmental barriers, too, such as attendance concerns.
- Proactively providing support for **all** students to be successful within the school.
- A commitment to improving instruction to ensure all kids learn regardless of external/internal factors



The Tiers of MTSS & Suggestions of What Intervention Can Look Like			
	Tier 1 Interventions Universal Designed Learning	Tier 2 Interventions Targeted Support	Tier 3 Interventions Intensive Support
Definition	Consists of UDL & good teaching strategies to ensure access to lessons.	Intervention support for students that need a little more help to master skills.	Intensive support that is more frequent & is sustained over longer periods.
<i>Concrete Examples</i>			
Focus Area	Tier 1 Interventions	Tier 2 Interventions	Tier 3 Interventions
Academics	Differentiated Instruction <u>Use of Anchor Charts</u>	Use of Personal Graphic Organizer Personal Flashcards	Additional Math Small Group (outside class) 2x weekly
Behavior	Whole Class Social Emotional Support Lesson	Behavior Contracts Peer "Accountability" Buddy	Informal or Formal Behavioral Plan
Culture	Classroom Dojo Color Chart	Home Visit Transportation Troubleshooting	Monthly Parent Check-Ins Attendance Plan



## The MTSS Cycle Process

Steps	The What	The How
1	Universal Screeners are administered to collect baseline data	<ul style="list-style-type: none"> <li>▪ STEP Reading Assessment</li> <li>▪ iReady Math Assessment</li> <li>▪ Strengths and Difficulty Questionnaire</li> <li>▪ Daily Attendance (Month, Quarter, etc.)</li> </ul>
2	IHP Staff analyze data and place students in MTSS tiers based on their data-evidenced needs	<ul style="list-style-type: none"> <li>▪ Students can be in different tiers depending on the focus area</li> </ul>
3	IHP Staff identify student needs and choose interventions to address focus area(s)	<ul style="list-style-type: none"> <li>▪ Staff write SMART goals aligned to focus area</li> </ul>
4	IHP Staff share the MTSS plan with families	<ul style="list-style-type: none"> <li>▪ Parents receive MTSS Ujima Plan that shares student interventions based on Tiers 2/3</li> </ul>
5	IHP Staff implement interventions and monitor student outcomes & responsiveness	<ul style="list-style-type: none"> <li>▪ Staff collect weekly data to inform the effectiveness of the intervention &amp; growth</li> </ul>
<p><b>Important Notes:</b></p> <p style="text-align: center;">Student academic, behavioral, and attendance data dictate MTSS Tiers.            Students can move throughout the MTSS tiers between assessment cycles (5-6 weeks).            Students can receive tiered interventions for as long as needed</p>		